

THE CHRIST HOSPITAL FOUNDATION

# GRATEFUL GIVING



**Ensuring the nation's best  
heart care, right here in  
your community**

*Several leaders of the Heart Team (left to right):  
Eugene Chung, M.D., Ian Sarembock, M.D.,  
Dean Kereiakes, M.D., Jay Schloss, M.D.,  
Geoff Answini, M.D., Greg Egnaczyk, M.D.*



# Your Home for **World-Class Heart Care**



When you hear about pioneering innovations in the diagnosis and treatment of heart disease, that news is often generated right here in Cincinnati. World-class heart care is a hallmark of our region, thanks to dedicated physician experts at The Christ Hospital. We are at the forefront of heart care—providing comprehensive programs, treatments, and clinical research for every type of heart disease.

## **We're Here For You**

Physicians at The Christ Hospital perform more heart procedures and research than anywhere else in the region, serving 75,000 patients each year. In fact, we are the only destination in the region for many leading-edge treatments and technologies, such as dissolving stents and catheter-based heart valve replacement. This means our patients can receive the best care in the nation, right here in their community.

## **Tomorrow's Heart Care Today**

During the past quarter century, significant "firsts" in cardiovascular medicine have taken place at The Christ Hospital, including the region's first balloon angioplasty, first open-heart bypass, and first stent procedure.

Through research, our physicians continue to discover new and better ways to diagnose, treat, manage, and prevent heart disease, making the heart care of tomorrow available to you and your family today.





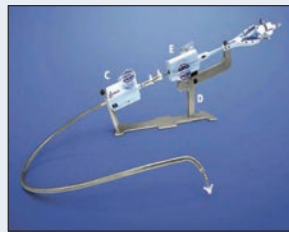
## LEADERS IN CARDIOVASCULAR INNOVATION

Physicians at the Lindner Research Center at The Christ Hospital have conducted more than 1,300 clinical trials, pioneering new devices, medicines, and minimally invasive surgical techniques, leading to trailblazing discoveries such as these below that improve and save lives.

**THE PARACHUTE DEVICE®** is implanted in the left ventricle of the heart through a small catheter. The device creates a partition between the heart muscle damaged by a heart attack and the healthy, functional muscle, to prevent heart enlargement and to help the heart pump more effectively.



**THE MITRACLIP®** device clips valve leaflets together to repair damaged and leaking mitral valves in the heart. The minimally invasive treatment can improve exercise performance, reduce shortness of breath, and decrease risk of heart failure.

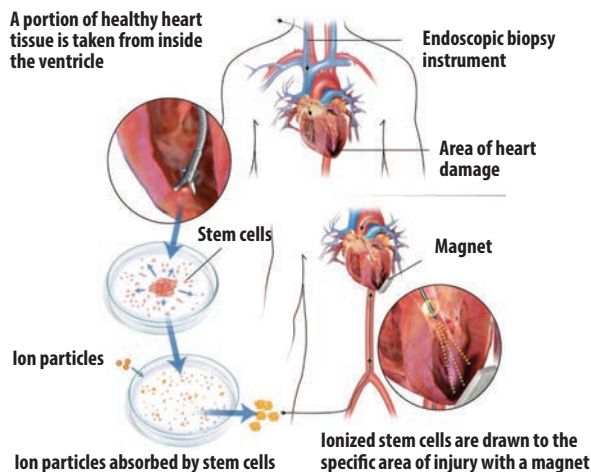


### REGENERATIVE CELL THERAPY,

a one-time treatment, infuses adult stem cells into the damaged weakened areas of the heart, allowing new cells to repair, restore, and even replace the damaged heart muscle with healthy heart issue. (Read about Joe Kohl, a patient who received this treatment, on page 7)

#### Healing damaged hearts

A portion of healthy heart tissue is taken from inside the ventricle



## NUMBER OF TREATMENT "FIRSTS" conducted at the Lindner Center for Research at The Christ Hospital:

First in the World:

6

First in the United States:

21

First in Ohio:

29

First in the Region:

65

"We are providing access to leading-edge technology years before it becomes available to others in the region. The difference this makes for our patients is substantial."

– Dr. Dean Kereiakes





## CREATING A FUTURE **WORTHY OF OUR PAST**

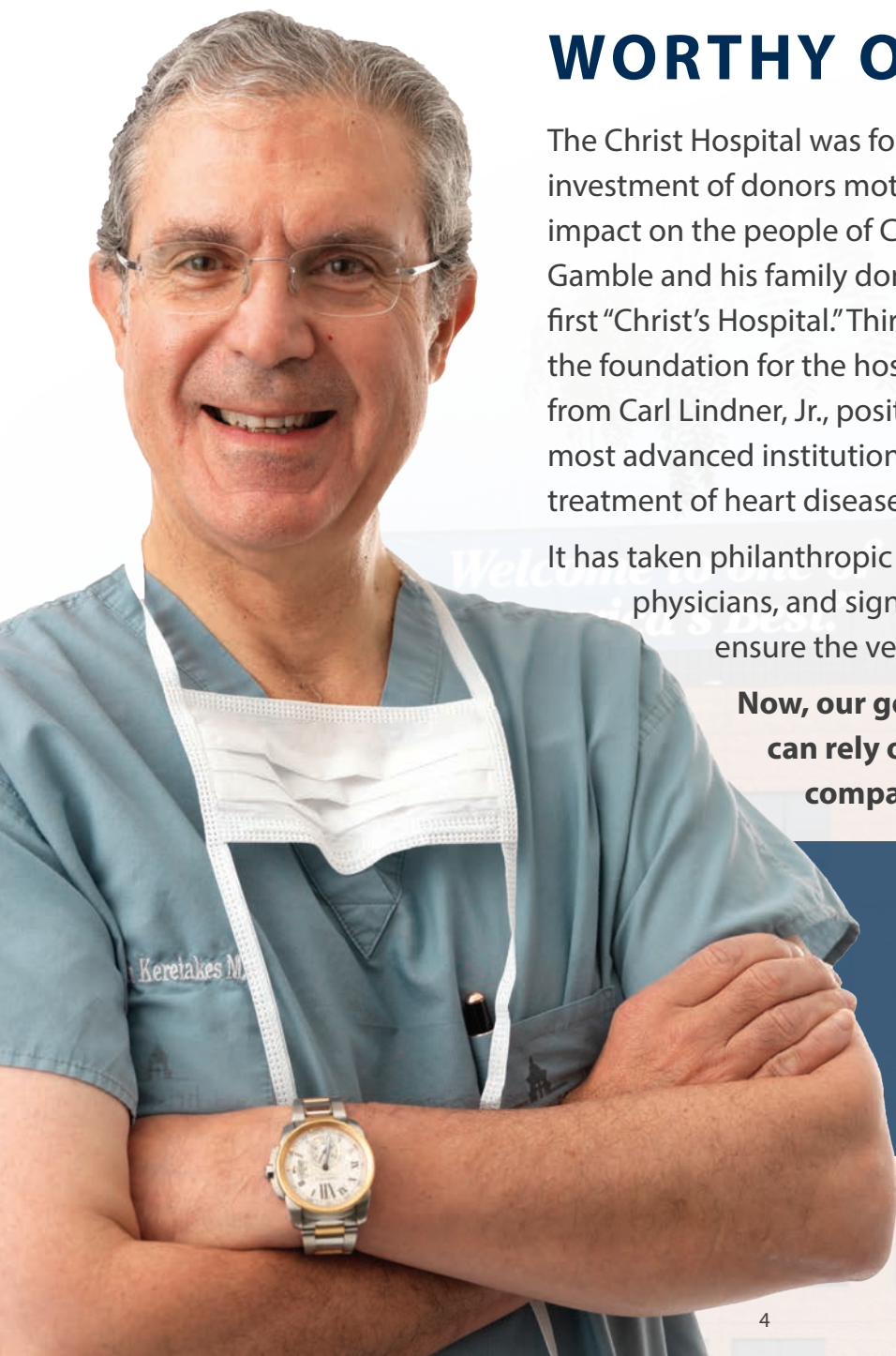
The Christ Hospital was founded upon the philanthropic investment of donors motivated by the desire to make a lasting impact on the people of Cincinnati. More than a century ago, James Gamble and his family donated the land and house that were the first “Christ’s Hospital.” Thirty-five years ago, another donation laid the foundation for the hospital’s heart program. This donation, from Carl Lindner, Jr., positioned The Christ Hospital as one of the most advanced institutions in the country for the evaluation and treatment of heart disease.

It has taken philanthropic support from the community, passionate physicians, and significant investments by the hospital to ensure the very best heart care, right here at home.

**Now, our goal is to ensure that future generations can rely on us for their heart care needs with compassion and excellence.**

“We can make an incredible, lasting impact on our region’s future by remaining at the forefront of heart care.”

– Dr. Dean Kereiakes







## THE CHRIST HOSPITAL HEART AND VASCULAR **CENTERS OF EXCELLENCE**

To remain at the forefront of heart care, we are embarking on an exciting and carefully considered plan to develop five highly specialized Heart and Vascular Centers of Excellence.

### **HEART FAILURE CENTER OF EXCELLENCE**

The center will focus on congestive heart failure, a chronic, progressive condition that affects the heart's ability to pump blood to the body.

### **STRUCTURAL HEART CENTER OF EXCELLENCE**

The center will focus on valvular heart disease, including conditions that affect the heart muscle, the architecture of the heart, and the valves that control the flow of blood. This center will build on the excellent clinical foundation of The Christ Hospital's existing heart valve programs.

### **HEART RHYTHM CENTER OF EXCELLENCE**

The center will focus on heart rhythm disorders, also known as arrhythmias, which affect the heart rate or pulse of the heart. The most frequent arrhythmia is atrial fibrillation or "Afib."

### **VASCULAR CENTER OF EXCELLENCE**

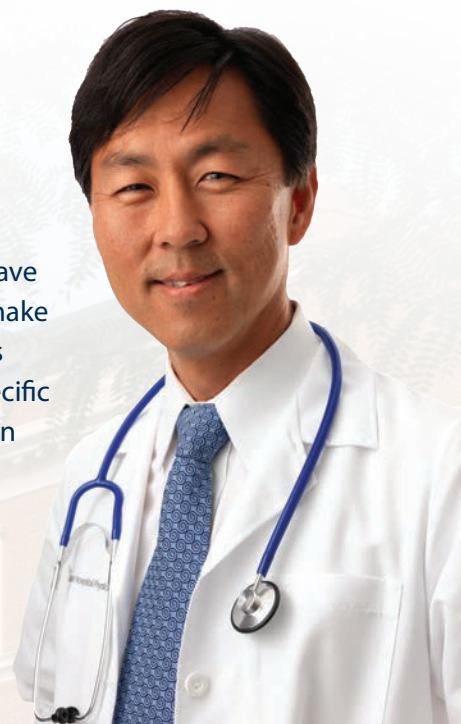
The center will focus on vascular disease or blockages of arteries, which can lead to aneurysms, limb amputation, or stroke.

### **THE CARL AND EDYTH LINDNER CENTER FOR RESEARCH**

The nationally-recognized center will continue to attract and implement clinical research trials that bring new medicines and medical devices to the region. The center currently offers hundreds of active trials in all areas of cardiovascular care.

"All of us here at The Christ Hospital have the same goal— to make sure that treatment is available for your specific heart issue, so you can survive and thrive."

— *Dr. Eugene Chung*



## INVESTING IN THE FUTURE

"In the rapidly changing world of heart health, meaningful philanthropic investment now will make the difference between good and great care moving forward. Philanthropic investments in The Christ Hospital Heart and Vascular Centers of Excellence will secure Cincinnati's position as a heart health leader, and ensure the region's continued access to exceptional heart care."

*Mike Keating, President and CEO  
The Christ Hospital Health Network*



# Giving From The Heart Makes a Powerful Impact

The Christ Hospital has identified four strategic areas in which philanthropic giving will yield the greatest impact: Emerging Technology, Endowments, Research, and Patients In Need.

## Emerging Technology

More than ever, technology is intertwined with, and vital to, heart care. As technological innovation advances, the differences in treatment and recovery grow exponentially. Philanthropic support for emerging technology ensures that caregivers at every level have the most current and most effective tools available to prevent, diagnose, treat, and manage patients with heart disease.

### TECHNOLOGY AT WORK

Our hybrid operating suite provides the space and technology to perform a wide-range of leading-edge procedures and surgeries. The suite includes 3D imaging, large flat projection screens, special lighting, and advanced surgical equipment that enable our heart team to work together seamlessly.



## Endowments

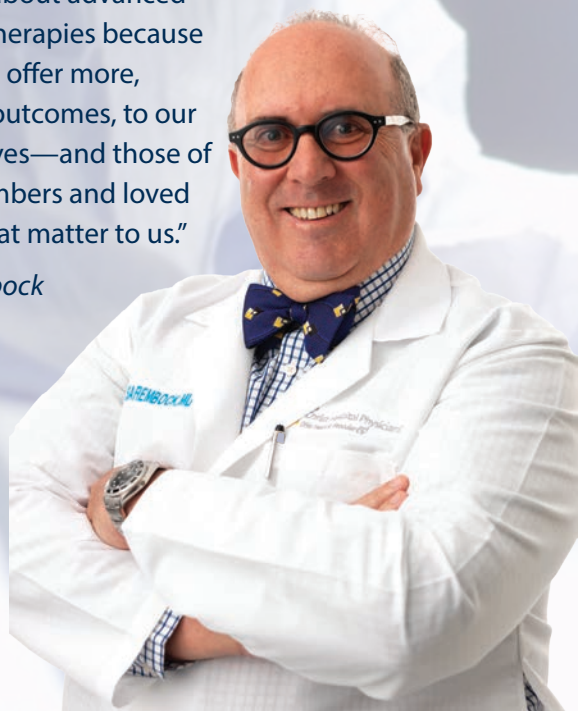
Endowment support will help recruit new accomplished physicians as well as retain the most talented physicians already working to advancing heart care at The Christ Hospital. Permanent endowments will provide support in perpetuity for program development and research.

### WHAT IS AN ENDOWMENT?

An endowment is a permanent, self-sustaining source of funding. Endowment assets are invested, and each year, a portion of the value is paid out to support the endowment's purpose.

*"As cardiovascular physicians, we get excited about advanced and improved therapies because it means we can offer more, with improved outcomes, to our patients. Your lives—and those of your family members and loved ones—are all that matter to us."*

*– Dr. Ian Sarembock*



## Research

Support for research will provide vital funding to pursue promising innovations and life-saving discoveries in heart care.

### CELL THERAPY RESEARCH HELPS JOE KOHL STAY HEALTHY

Joe Kohl, an information technology manager, was sitting at his desk at work when his chest started to burn.

"The burning was intense," he recalled. "I got really thirsty. I was sweating, feeling bad, and in a lot of pain. I told my boss something was wrong, that I was probably having a heart attack." His boss called 911, and Joe was taken to The Christ Hospital.

After initial treatment, physicians offered Joe participation in a clinical research study that could strengthen his damaged heart muscle and prevent another heart attack in the future. The regenerative cell therapy study (description on page 3) is available locally only at The Christ Hospital.

"The doctors told me it was a new treatment, and I was a little worried. But they talked me through the process, and I'm very glad I did it," he said.

"This revolutionary method of treatment may boost the heart's natural healing ability, improving the patient's overall strength and function," said Dr. Kereiakes. Joe said the treatment, along with lifestyle changes that have included losing more than 100 pounds, has helped him stay healthy.

"The day I had my heart attack was a very scary day, and the heart team pulled me through," he said. "There are other good hospitals in town, but when it comes to my heart, there's no better place than The Christ Hospital."



Joe Kohl

## Patients In Need

Support for patients in need provides help for those who cannot afford out-of-pocket expenses associated with quality heart care, allowing them to focus on their health and healing.

### MEMORIAL GIFT 'PAYS IT FORWARD' FOR HEART PATIENTS

John D. Silvati was "a big man with a big heart." That's how his wife Linda remembers him. Despite a 30-year struggle with congestive heart failure, John was upbeat, active in his church and community, and keenly concerned about the well-being of others, particularly other heart patients he met at The Christ Hospital.

John came to the hospital to receive a Ventricular Assist Device (VAD), a mechanical pump that supports heart function and blood flow. After the procedure, John was an active participant in the VAD Support Group, where he befriended fellow patients. Linda remembers her husband worrying about his new friends, especially those without adequate health insurance or financial support to cover the costs of their treatment.

When John passed away in 2014, Linda requested that memorials be directed to support patients in need in the VAD Program. Today, donations from John's wide circle of friends are helping patients who can't afford specialty supplies and medications needed for the device. In addition, the Dater Foundation, where John was a longtime volunteer and founding board member, made a \$10,000 gift in John's memory. The man with the big heart continues to touch the lives of patients at The Christ Hospital by helping those who need it most.



John Silvati and his wife, Linda



Rated Most Preferred Hospital and Consumer Choice for Healthcare in the region for 20 consecutive years.



Ranked the #1 hospital in the region by *U.S. News & World Report*. Recognized as one of the top 50 hospitals in the United States by *U.S. News & World Report* for 17 consecutive years.



Ranked "high performing" in cardiology and heart surgery by *U.S. News & World Report*.



The Lindner Research Center has been ranked #1 in Medtronic's quarterly review of the top 49 clinical cardiovascular research centers in the United States for two years in a row.



Named among the Top 50 Cardiovascular Hospitals in the United States by Truven Health Analytics for 12 years.



Recipient of American Heart Association Awards for excellence in heart attack treatment, heart failure care and patient education.



2123 Auburn Avenue, Suite 528  
Cincinnati, OH 45219

Nonprofit  
US Postage  
PAID  
Cincinnati, OH  
Permit 6523

## A MESSAGE FROM THE PRESIDENT



When it comes to new heart procedures and technologies in the United States, The Christ Hospital is leading the way. And it's due, largely, to passionate physicians at The Christ Hospital, working tirelessly to keep us at the forefront of heart care.

The quality of care and access to heart treatments that The Christ Hospital offers is unsurpassed in our region. As we look to the future, we want to ensure that you, your family, and future generations will benefit from having the best care right here in our city.

This special edition of *Grateful Giving* is dedicated to our Heart and Vascular program and our vision for the future. Visions require investment, and the investment needed for our future must come from the philanthropic support of generous people like you.

Now, we need your help to ensure that future generations have the same access to innovative, life-saving treatment options. As philanthropy laid the foundation for The Christ Hospital's heart program, it is crucial to continuing its legacy.

The future of heart care is happening now, and you have the chance to get involved by supporting this important effort.

Gratefully,

Richard F. Kammerer, President  
*The Christ Hospital Foundation*

**To support The Christ Hospital Heart and Vascular Program, or for more information, contact:**

The Christ Hospital Foundation  
Richard Kammerer, President  
Richard.Kammerer@thechristhospital.com  
513-585-3395